

thecodestore.co.uk

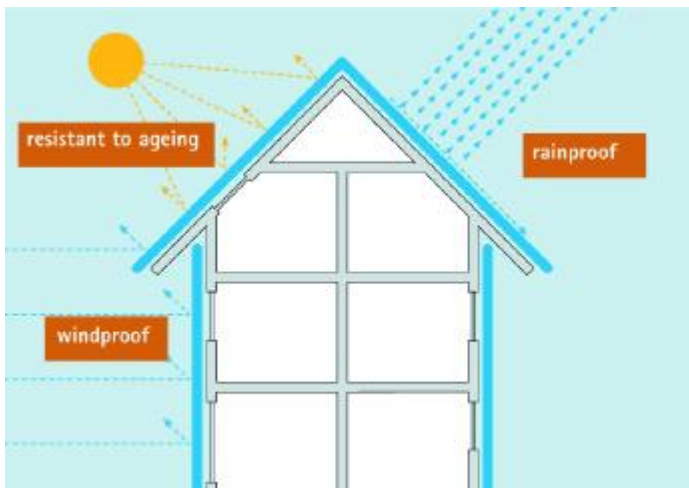
thecodestore.co.uk Ltd

Airtight Exterior Membranes

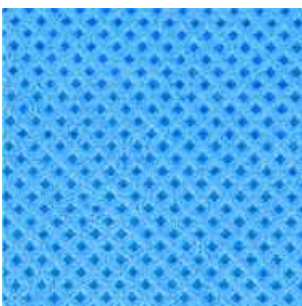


Main characteristics of the Solitex products

Solitex membranes have an impressive range of basic characteristics: diffusion-permeable, rainproof, highly tear-resistant. Quick and safe to work with. The illustration shows a basic overview of some of these characteristics.



Cover Fleece



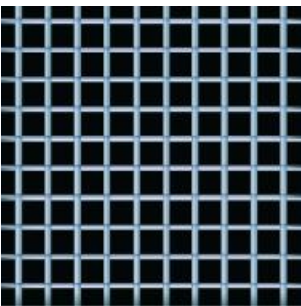
The robust polypropylene micro-fibre cover fleece is water - resistant and provides optimum protection against the penetration of damp. It protects the specialist film below from damage and UV radiation. The honeycomb structure guarantees non-slip properties even when wet. It is coloured blue to prevent dazzling when it is being laid.

Specialist Film



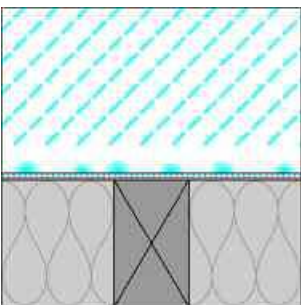
A stretchable, diffusion permeable specialist film gives the Solitex membranes extremely high resistance to water. At the same time, vapour can pass through it almost unrestricted. In addition, the specific properties of the specialist film ensure the excellent wind resistance properties of the Solitex membranes.

Reinforcement Material



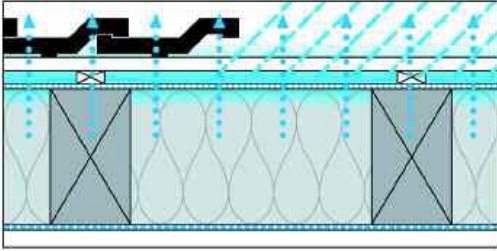
The tightly meshed polypropylene reinforcement material doubles the overall strength of the Solitex Plus membrane. If it is used as a sarking membrane, the material is highly effective at preventing the membrane being broken by nails or feet.

No Tent Effect



The fact that the Solitex membranes are multilayered prevents the tent effect (tent canvases leak at points of contact). The Solitex membranes can be supported across the whole surface.

Closed Cell Technology



Ensures that dampness can dry more easily and quickly to the outside. This is an advantage both during construction (when the timber may be damp) and during the life of the building.

Solitex

£66.00

Exterior sarking, roof lining and wall lining membranes. They have an impressive range of basic characteristics: diffusion-permeable, rainproof, highly tear-resistant and are quick and safe to work with.

[\[Product Details...\]](#)